

The Role of Independent Educational Consultants in College Admissions



IECA's membership has more than **tripled** in the last 10 years, with over **2,800 members today.**

IECA college consultant membership is **three times** that of any other IEC organization.

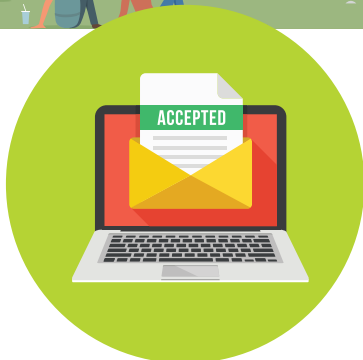
In **public schools**, there is a ratio of **408:1** student to counselor (source: American School Counselor Association).



The average student to **IECA member** ratio is **24:1.**



IECA members spend an average of **38%** of their time on **research and campus visits.**



Students who work with an IECA member are **3½ times** more likely to attend **private college** and are **3 times** more likely to attend an **out-of-state college.**



88% of IECA members are **college admission experts,** and an average IECA member has **9.7 years of experience in counseling.**



The average IECA member **charges about 1/10 the amount** often cited in the press (**75%** of IECA members offer hourly and less costly package rates).

39% of IECA member clients **are non-white.**



IECA members work with students from **every state and 85 countries.**

26% of high-achieving seniors hire an IEC in their college search & application process

(source: Lipman Hearne/NRCCUA).



IECA's legislative advocacy efforts include promoting affordability and openness in the admission process.



Independent Educational Consultants Association
3251 Blenheim Boulevard • Suite 510 • Fairfax, Virginia 22030
703-591-4850 • info@IECAonline.com